

MODULE 10 L03

Digestive System: Large Intestine Histology

Dr. Lisa Brinn
lbrinn@fiu.edu



Large Intestine

- Subdivisions:

- ❖ Cecum

- Appendix

- ❖ Colon

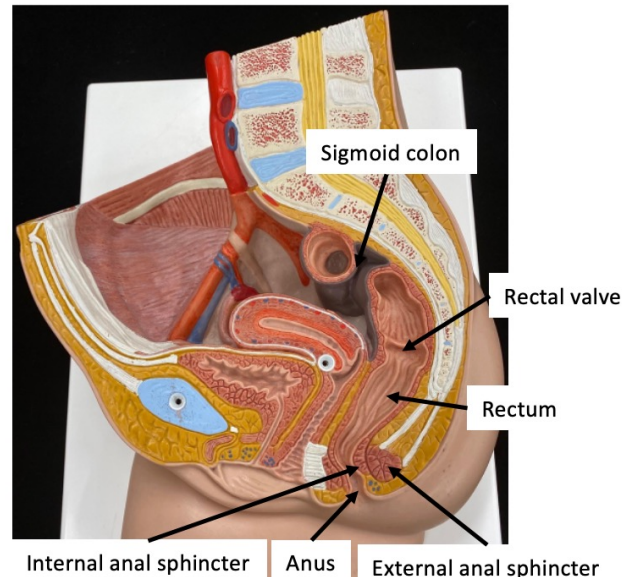
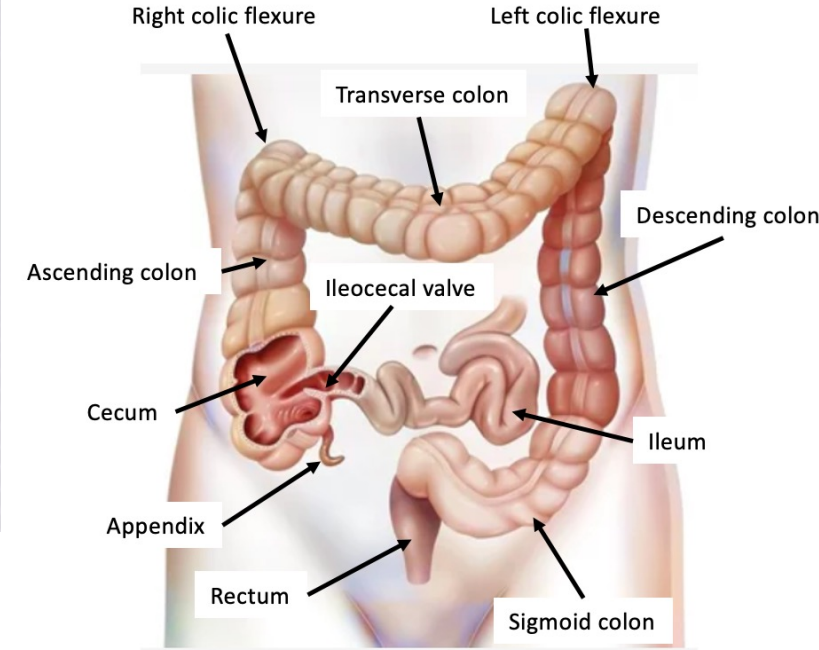
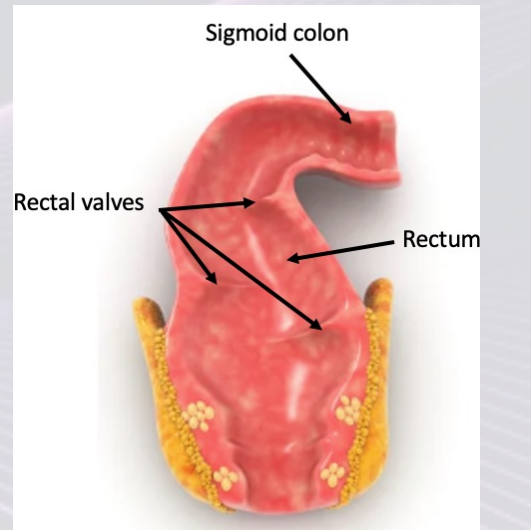
- Ascending
 - Right colic flexure (hepatic)
- Transverse
 - Left colic flexure (splenic)
- Descending
- Sigmoid

- ❖ Rectum

- Rectal valves

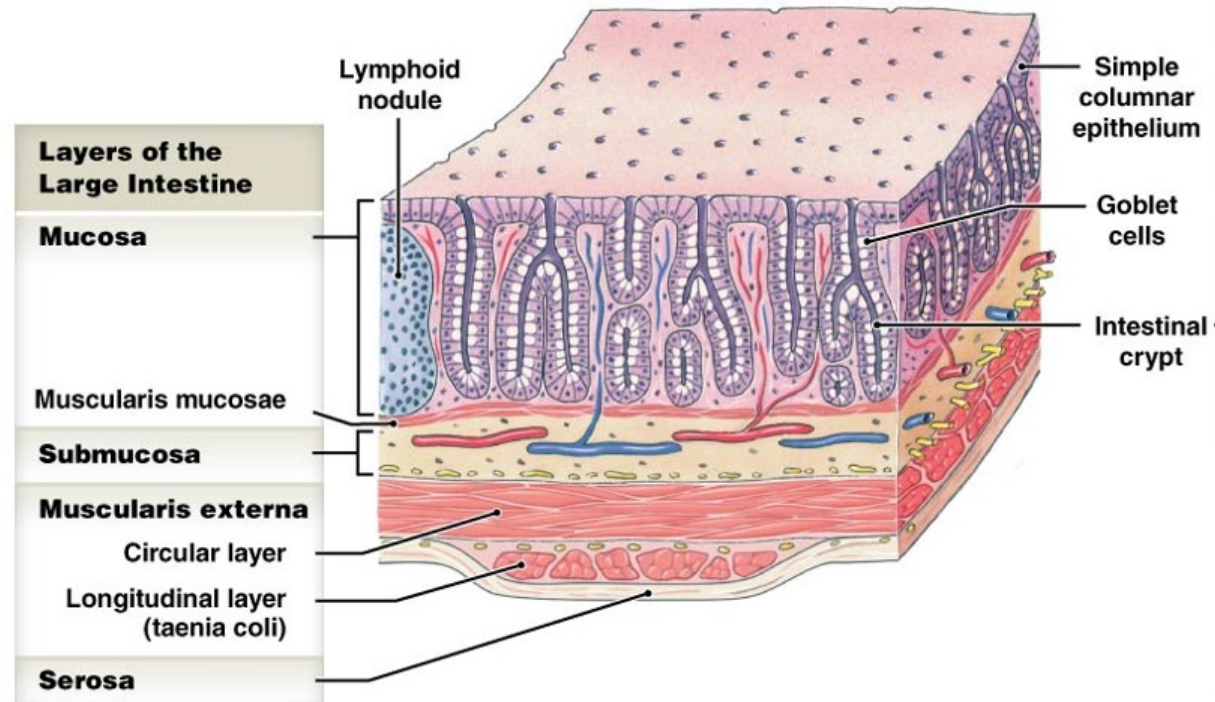
- ❖ Anal canal

- Anus
 - External anal sphincter
 - Internal anal sphincter



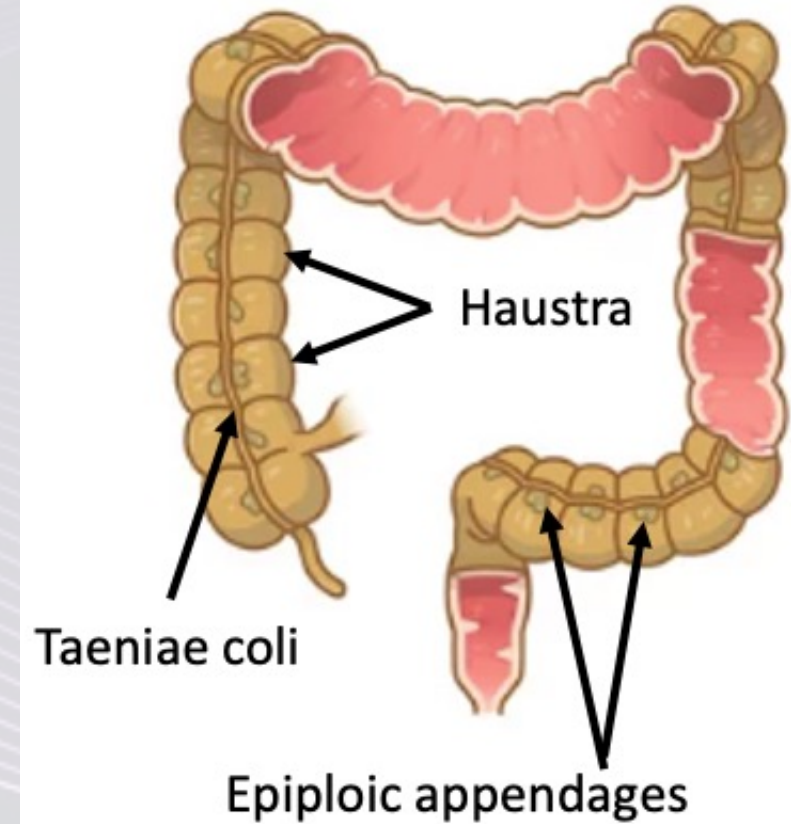
Large Intestine Histology

- Histology:
 - ❖ Mucosa
 - Lymphoid nodule
 - ❖ Submucosa
 - ❖ Muscularis externa
 - Circular muscle
 - Longitudinal muscle
 - Taenia coli
 - ❖ Serosa
- Nervous plexus
 - ❖ Myenteric plexus
 - ❖ Submucosal plexus



Large Intestine Unique Features

- Taenia coli
 - ❖ Decreased longitudinal muscle layer
- Haustra
 - ❖ pouch-like structures
 - ❖ Help with digestion
- Epiploic appendages
 - ❖ Fat-filled sacs



Lab Models

